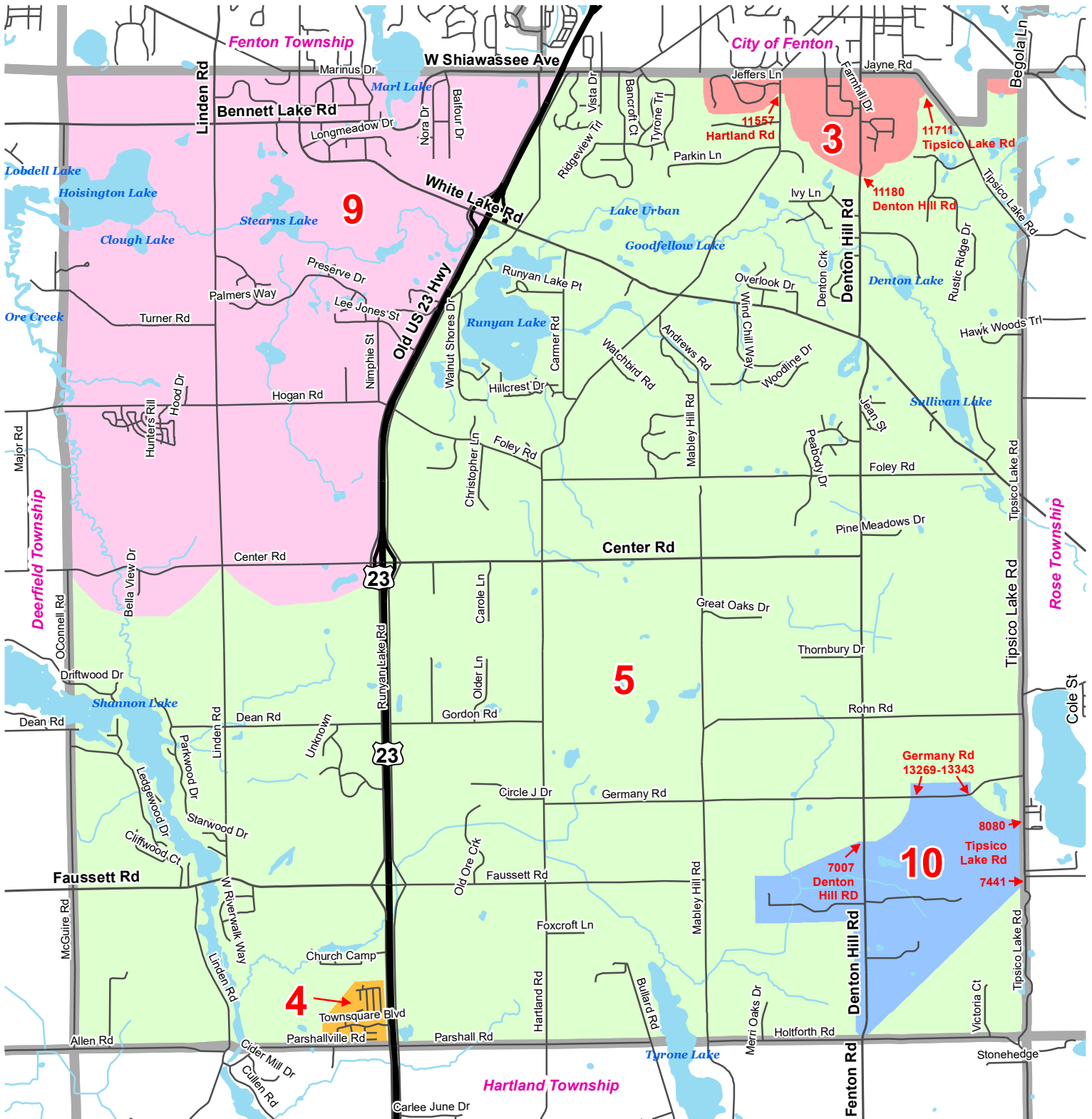


# ISO's Public Protection Classifications (PPC) Tyrone Township, MI



Question on this map can be directed to the Tyrone Township offices at 810-629-8631 or by visiting the following websites: [www.tyronetownship.us](http://www.tyronetownship.us) or [www.cityoffenton.org](http://www.cityoffenton.org)



**PPC**

	3		9
	4		10
	5		

Addresses in red on the map indicate where the PPC changes categories.

