

City of Fenton  
2008 Millage Table Rates

**Fenton Schools**

2008 Millage Rates - Non Principal Residence

	Summer	Winter	Total
School Education Tax	6	0	6
Fenton Schools	20.9181	2.9181	23.8362
Genesee Intermediate School District	1.7671	1.767	3.5341
Mott Community College	1.3398	1.3398	2.6796
City of Fenton	10.6226	0	10.6226
Genesee County	5.5072	2.6694	8.1766
Library	0	0.7481	0.7481
Bishop Airport	0	0.4847	0.4847
Mass Transportation Authority	0	0.7998	0.7998
Southern Lakes Parks and Recreation	0	0.3726	0.3726
	46.1548	11.0995	57.2543

**Fenton Schools**

2008 Millage Rates - Principal Residence

	Summer	Winter	Total
School Education Tax	6	0	6
Fenton Schools	2.8181	2.9181	5.7362
Genesee Intermediate School District	1.7671	1.767	3.5341
Mott Community College	1.3398	1.3398	2.6796
City of Fenton	10.6226	0	10.6226
Genesee County	5.5072	2.6694	8.1766
Library	0	0.7481	0.7481
Bishop Airport	0	0.4847	0.4847
Mass Transportation Authority	0	0.7998	0.7998
Southern Lakes Parks and Recreation	0	0.3726	0.3726
	28.1548	11.0995	39.2543

**Lake Fenton Schools**

2008 Millage Rates - Non Principal Residence

	Summer	Winter	Total
School Education Tax	6	0	6
Lake Fenton Schools	0	22.8955	22.8955
Genesee Intermediate School District	0	3.5341	3.5341
Mott Community College	1.3398	1.3398	2.6796
City of Fenton	10.6226	0	10.6226
Genesee County	5.5072	2.6694	8.1766
Library	0	0.7481	0.7481
Bishop Airport	0	0.4847	0.4847
Mass Transportation Authority	0	0.7998	0.7998
Southern Lakes Parks and Recreation	0	0.3726	0.3726
	23.4696	32.844	56.3136

**Lake Fenton Schools**

2008 Millage Rates - Principal Residence

	Summer	Winter	Total
School Education Tax	6	0	6
Lake Fenton Schools	0	4.8955	4.8955
Genesee Intermediate School District	0	3.5341	3.5341
Mott Community College	1.3398	1.3398	2.6796
City of Fenton	10.6226	0	10.6226
Genesee County	5.5072	2.6694	8.1766
Library	0	0.7481	0.7481
Bishop Airport	0	0.4847	0.4847
Mass Transportation Authority	0	0.7998	0.7998
Southern Lakes Parks and Recreation	0	0.3726	0.3726
	23.4696	14.844	38.3136

**Holly Schools - Oakland County Parcels**

2008 Millage Rates - Non Principal Residence

	Summer	Winter	Total
School Education Tax	6	0	6
Holly Schools	25	0	25
Oakland Intermediate School District	3.369	0	3.369
City of Fenton	10.6226	0	10.6226
Oakland County	4.19	0.2415	4.4315
Oakland Community College	1.5844	0	1.5844
Parks	0	0.2146	0.2146
HCMA	0	0	0
Zoo Authority	0	0.1	0.1
	50.766	0.5561	51.3221

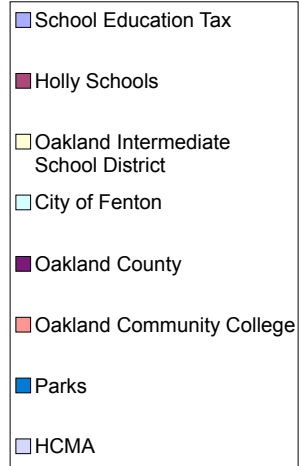
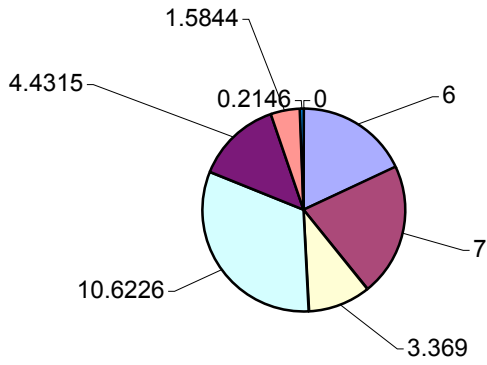
**Holly Schools - Oakland County Parcels**

2008 Millage Rates - Principal Residence

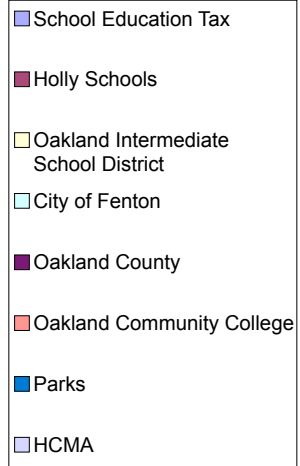
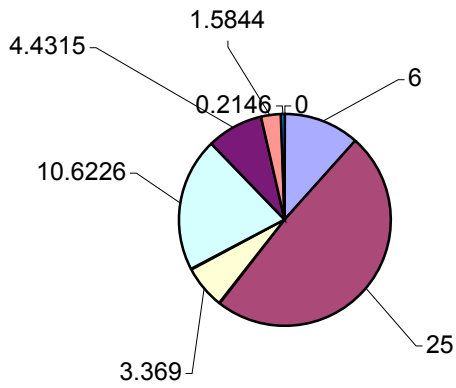
	Summer	Winter	Total
School Education Tax	6	0	6
Holly Schools	7	0	7
Oakland Intermediate School District	3.369	0	3.369
City of Fenton	10.6226	0	10.6226
Oakland County	4.19	0.2415	4.4315
Oakland Community College	1.5844	0	1.5844
Parks	0	0.2146	0.2146
HCMA	0	0	0
Zoo Authority	0	0.1	0.1
	32.766	0.5561	33.3221

## 2008 Millage Rates Holly Schools Resident

### Principal Residence

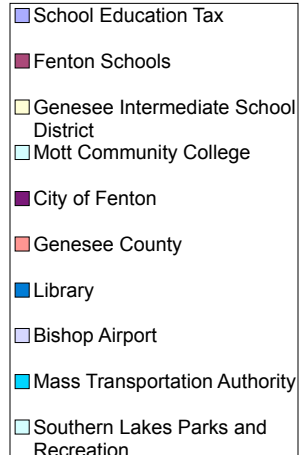
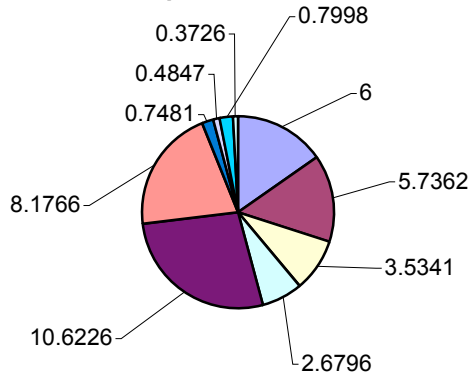


### Non-Principal Residence

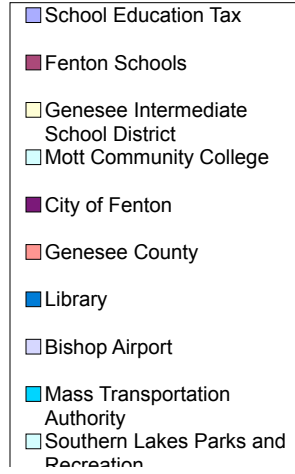
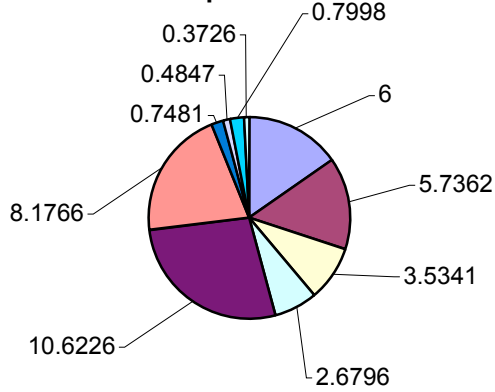


## 2008 Millage Rates Fenton Schools Resident

### Principal Residence

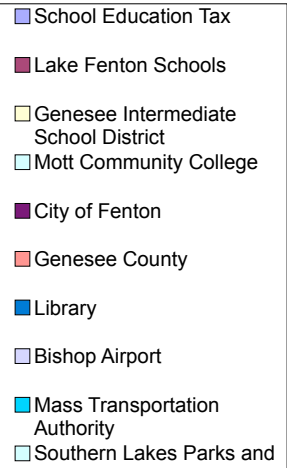
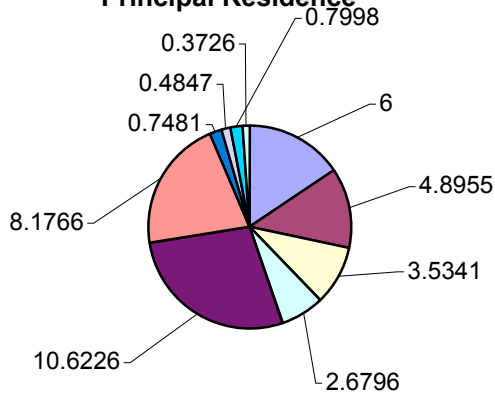


### Non-Principal Residence



## 2008 Millage Rates Lake Fenton Schools Resident

### Principal Residence



### Non-Principal Residence

