

City of Fenton
2007 Millage Table Rates

Fenton Schools

2007 Millage Rates - Non Principal Residence

	Summer	Winter	Total
School Education Tax	6	0	6
Fenton Schools	20.8181	0	20.8181
Genesee Intermediate School District	1.7671	0	1.7671
Mott Community College	1.3398	0	1.3398
City of Fenton	10.6226	0	10.6226
Genesee County	5.5072	0	5.5072
Library	0	0	0
Bishop Airport	0	0	0
Mass Transportation Authority	0	0	0
Southern Lakes Parks and Recreation	0	0	0
	46.0548	0	46.0548

Fenton Schools

2007 Millage Rates - Principal Residence

	Summer	Winter	Total
School Education Tax	6	0	6
Fenton Schools	2.8181	0	2.8181
Genesee Intermediate School District	1.7671	0	1.7671
Mott Community College	1.3398	0	1.3398
City of Fenton	10.6226	0	10.6226
Genesee County	5.5072	0	5.5072
Library	0	0	0
Bishop Airport	0	0	0
Mass Transportation Authority	0	0	0
Southern Lakes Parks and Recreation	0	0	0
	28.0548	0	28.0548

Lake Fenton Schools

2007 Millage Rates - Non Principal Residence

	Summer	Winter	Total
School Education Tax	6	0	6
Lake Fenton Schools	0	0	0
Genesee Intermediate School District	0	0	0
Mott Community College	1.3398	0	1.3398
City of Fenton	10.6226	0	10.6226
Genesee County	5.5072	0	5.5072
Library	0	0	0
Bishop Airport	0	0	0
Mass Transportation Authority	0	0	0
Southern Lakes Parks and Recreation	0	0	0
	23.4696	0	23.4696

Lake Fenton Schools

2007 Millage Rates - Principal Residence

	Summer	Winter	Total
School Education Tax	6	0	6
Lake Fenton Schools	0	0	0
Genesee Intermediate School District	0	0	0
Mott Community College	1.3398	0	1.3398
City of Fenton	10.6226	0	10.6226
Genesee County	5.5072	0	5.5072
Library	0	0	0
Bishop Airport	0	0	0
Mass Transportation Authority	0	0	0
Southern Lakes Parks and Recreation	0	0	0
	23.4696	0	23.4696

Holly Schools - Oakland County Parcels

2007 Millage Rates - Non Principal Residence

	Summer	Winter	Total
School Education Tax	6	0	6
Holly Schools	25	0	25
Oakland Intermediate School District	3.369	0	3.369
City of Fenton	10.6226	0	10.6226
Oakland County	4.19	0	4.19
Oakland Community College	1.5844	0	1.5844
Parks	0	0	0
HCMA	0	0	0
	50.766	0	50.766

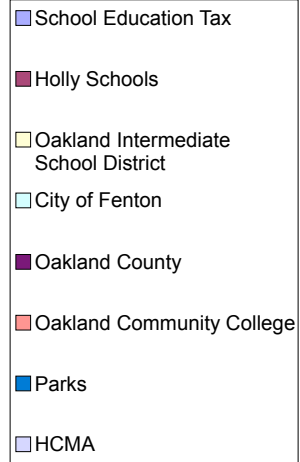
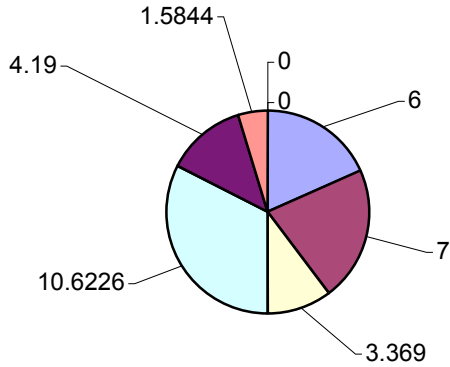
Holly Schools - Oakland County Parcels

2007 Millage Rates - Principal Residence

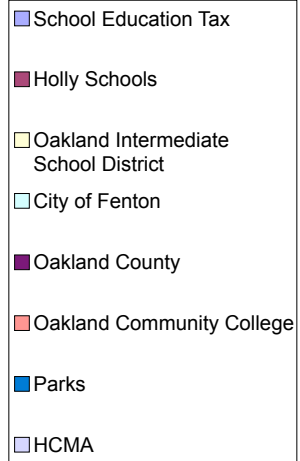
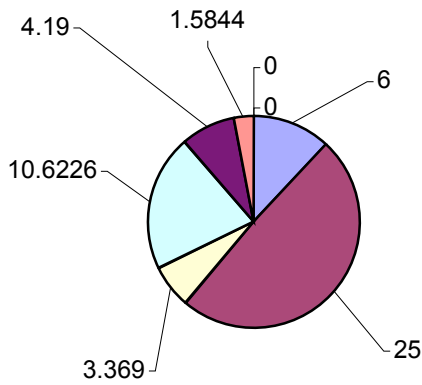
	Summer	Winter	Total
School Education Tax	6	0	6
Holly Schools	7	0	7
Oakland Intermediate School District	3.369	0	3.369
City of Fenton	10.6226	0	10.6226
Oakland County	4.19	0	4.19
Oakland Community College	1.5844	0	1.5844
Parks	0	0	0
HCMA	0	0	0
	32.766	0	32.766

2007 Millage Rates Holly Schools Resident

Principal Residence

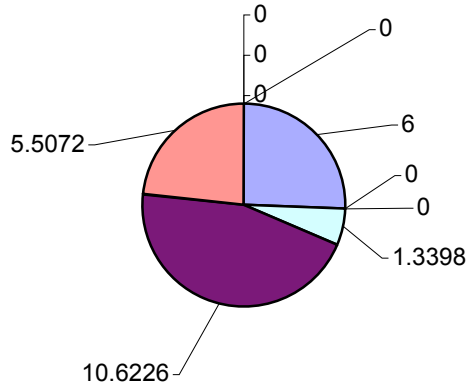


Non-Principal Residence



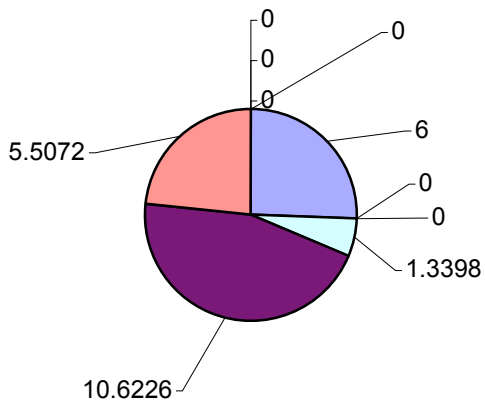
2007 Millage Rates Lake Fenton Schools Resident

Principal Residence



- School Education Tax
- Lake Fenton Schools
- Genesee Intermediate School District
- Mott Community College
- City of Fenton
- Genesee County
- Library
- Bishop Airport
- Mass Transportation Authority
- Southern Lakes Parks and Recreation

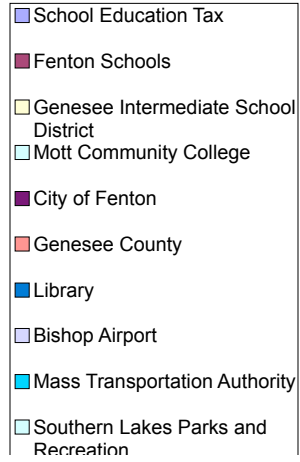
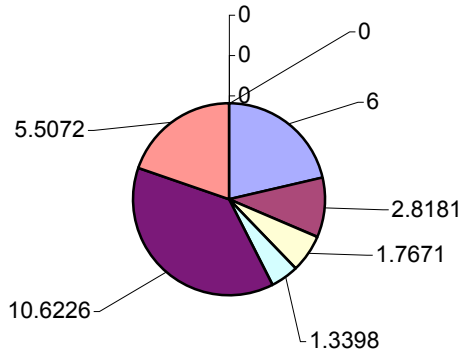
Non-Principal Residence



- School Education Tax
- Lake Fenton Schools
- Genesee Intermediate School District
- Mott Community College
- City of Fenton
- Genesee County
- Library
- Bishop Airport
- Mass Transportation Authority
- Southern Lakes Parks and Recreation

2007 Millage Rates Fenton Schools Resident

Principal Residence



Non-Principal Residence

