

- Facilities:* Small covered picnic area, river trail wayfinding sign and a small boat launch.
- Accessibility:* Accessibility ranking – 2. Barrier free improvements could be made to this facility including paving the parking lot, as well as adding a barrier free canoe/kayak launch.
- DNR Recreation Grants:* None awarded to date.

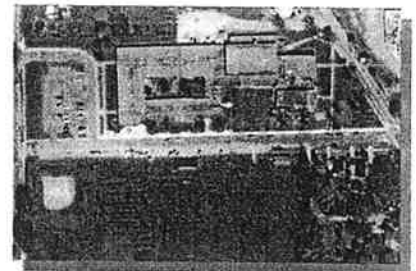
3 *Fenton Community Center.* This building is located on approximately 3.3 acres in the center of town, and is host to a variety of uses. The Center is owned by the City, but is partially funded by the Rackham Foundation. The Rackham Foundation was set up by Horace Rackham and is now run by the Regents of the University of Michigan - Ann Arbor. The foundation is a perpetual endowment fund which is responsible for half of the Center's income. Residents and groups are able to rent the Community Center for many different purposes including art and craft shows, receptions, luncheons, etc. The Center itself is composed of a large open room, a kitchen, 3 meeting rooms, and restrooms.

4 *Fenton High School and Middle School Campus.* The largest of the three community parks, with over 116 acres of land, this site has some of the features of a typical community park. It contains multi-purpose practice fields, tennis courts, and track and field. While it does lack play equipment, hiking trails and picnic areas and other things found in a typical community park, it does serve specific recreational needs of the community. This school is located on the same campus with the high school. The new middle school adds new baseball diamonds, multi-purpose practice fields, and an indoor gymnasium to the list of school district facilities.



- Size:* 116.1 acres
- Age Groups Served:* All ages
- Location:* Located on Owen Road just east of US-23.
- Facilities:* Several ball diamonds, a football field, a walking/running track, 2 gyms, soccer fields and open space.

5 *Fenton Intermediate School.* This school site, like the high school, has high intensity recreational facilities including: a football field, soccer goals, and one baseball diamond. The school property covers only 15.7 acres and lacks the play equipment, hiking trails, picnic areas and many other facilities found in community parks.



- Size:* 15 acres
- Age Groups Served:* Predominantly K-12.
- Location:* Located on Ellen Street between Adelaide and West Street.
- Facilities:* Playground, ball diamond, 2 gyms and a large grassy field.

6 *North Road Elementary.* Considered one of the larger parks in Fenton, North Road Elementary is located between North Road and Wood Street.



- Size:* 10 acres
- Age Groups Served:* Predominantly youth.
- Location:* Located off of North Road

Facilities: within a dense residential area.
Gymnasium, playground, basketball hoops, ball diamond and soccer fields.

❖ *St. John Elementary.* This parochial school site is located on Lincoln Street just west of Bush Park. It should be noted that this area is intended for the use of the school children and is not necessarily a public park; although the church keeps it open for public use.

Size: 12 acres
Age Groups Served: Predominantly youth.
Location: Located off of Adelaide in a dense residential area and adjacent to Bush Park.



Facilities: Gymnasium, playground, basketball hoops and a ball diamond.

❖ *State Road Elementary.* This school is located on State Road, at the southern most end of the city. This site has good access for children from the school as well as from the adjacent parking lot.

Size: 13.2 acres
Age Groups Served: Predominantly youth.
Location: Located off of State Road in a residential area.



Facilities: Gymnasium, large playscape, basketball hoops, ball diamond and large grass field with soccer goal posts.

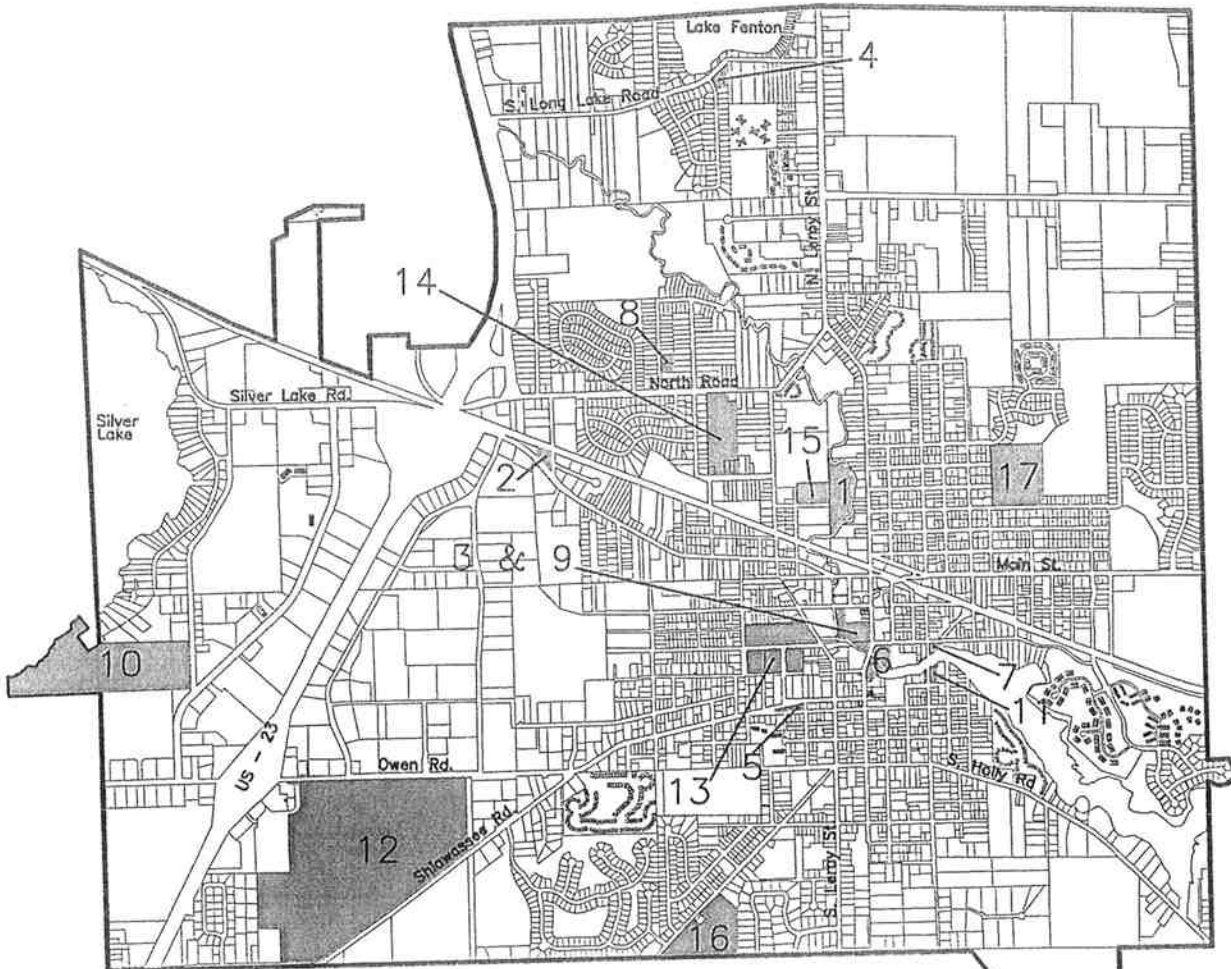
❖ *Tomek-Eastern Elementary.* This school site is on approximately 15.5 acres located on the east side of the city.

Size: 15.5 acres
Age Groups Served: Predominantly youth.
Location: Located off of 3rd, 4th and 5th Streets within a dense residential neighborhood.



Facilities: Gymnasium, playground, basketball hoops, ball diamond and large grass field.

❖ *Shiawasse Riverwalk* The riverwalk spans O'Donnell, Mill Pond and Rackam parks and was funded under MDNR Grant #88-160. The grant was to acquire the land connecting the parks and the land is still in use as the walkway.



Existing City Recreation and Public Facilities City of Fenton

Public Facilities

1. Bush Park
2. Conklin Park
3. Fenton Community Center
4. Franklin D. Adams Park
5. Freedom Park
6. Millpond Park
7. O'Donnell Park
8. Oak Park
9. Rackham Park
10. Silver Lake Park
11. Strom Park

School Facilities

12. Fenton High School and Middle School
13. Fenton Intermediate School
14. North Road Elementary
15. St. John Elementary
16. State Road Elementary
17. Tomek-Eastern Elementary

MAP 2
PAGE 12



ROWE PROFESSIONAL SERVICES COMPANY

The ROWE Building
848 S. Saginaw St., Ste. 200, P.O. Box 2748
Fenton, MI 48802

Co (517) 341-7500
Ft (517) 341-7573
www.roweps.com

Table 1: Existing Recreation Facilities

	Acres	Play areas	Ballfields / Backstops	Softball fields	Soccer	Football	Volleyball	Tennis Courts	Track & Field	Basketball CS (B-boards)	Play Equipment	Picnic Areas	Nature / hiking trail	Pavilion / Deck / Gazebo	Pond / Lake	Boat Launch	Historical monument / memorial	Buildings	Concession / Restroom	Gymnasium / Shop	Score
School Facilities																					
Tomek Elem.	15.5	1			2					2(4)	Y	1		1						1	
North Road Elem.	10.3		1		2					1	Y									1	
St. John Elem.	12		1			1				2	Y									1	
State Road Elem.	13.2				2					1(3)	Y	1								1	
Fenton Intermediate	15.7	1			1	1			1	(2)	N								2		
Fenton High and Middle	116.1	6	13		2	1		8	1		N	2							2		1
Subtotal School	182.8	8	15		9	3	0	8	2	6(9)	4	2	0	1	0	0	0	0	2	8	1
Public Facilities																					
Franklin Adams Park	1.5	1								(.5)	N	1									
Bush Park	5				1		4				Y	1		2					1		
Conklin Park	1										Y	1									
Freedom Park	.3										N	1		1							
Millpond Park	2.3										Y	1		1	1						
Oak Park	1										Y	1									
O'Donnell Park	.6										N	1		1	1						
Rackham Park	3							2			N	1		1	1						
Strom Park	.7										N	1		1	1					1	
Fenton Comm. Center	3.3										N	2	1	2	1	1		1		1	
Silver Lake Park	35.4	1	1				1				Y	2	1	8	4	2	2	1	2	1	0
Subtotal Public	54.2	2	1		1	0	5	2	0	(1)	2	9	1	8	4	2	2	1	2	1	0
TOTAL	237	10	16		10	3	5	10	2	6(10)	6	11	1	9	4	2	2	1	4	4	1

Regional Parks and Facilities

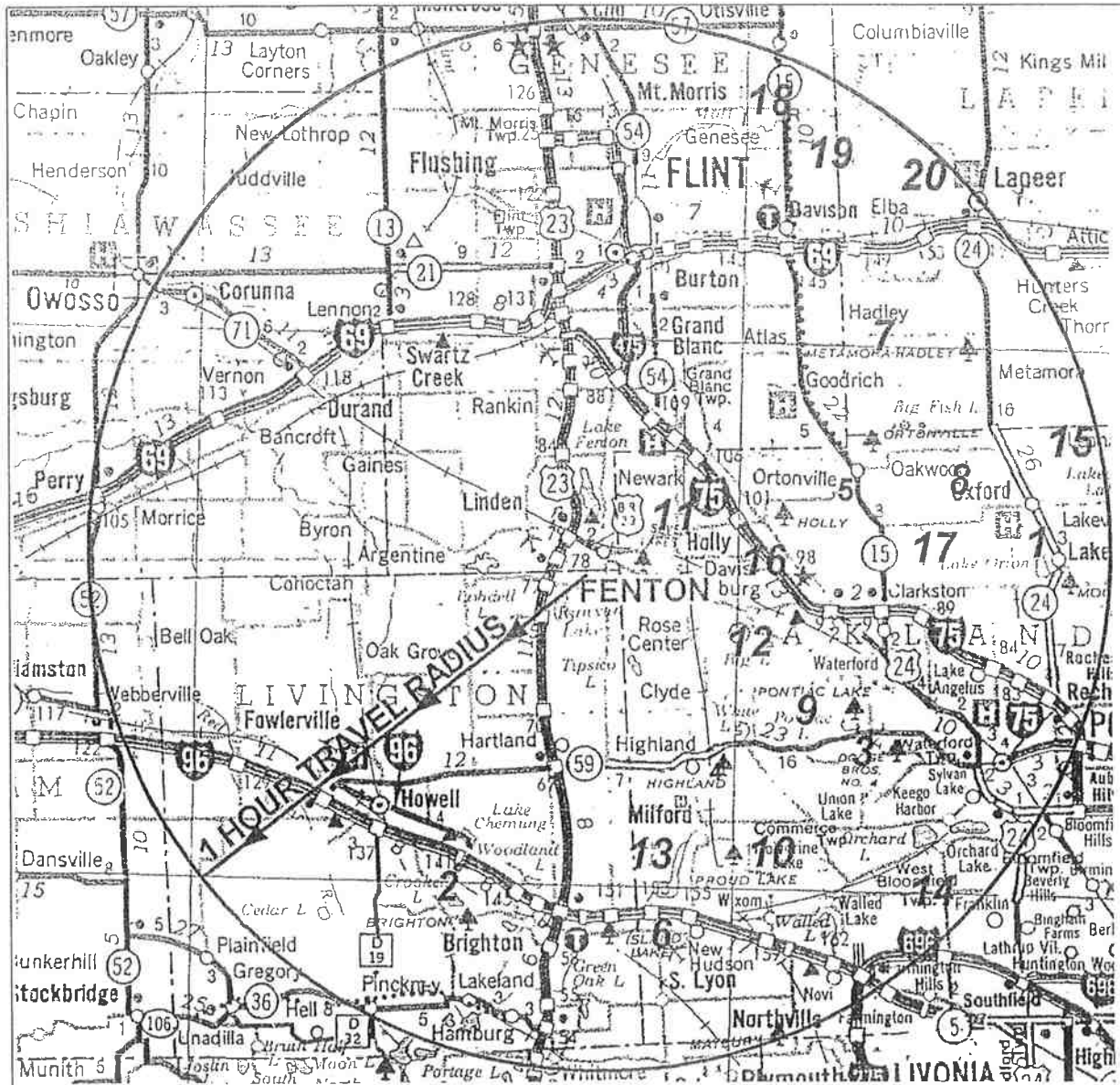
Regional recreation areas are large facilities serving people within a broad geographic area. For the purpose of the Fenton Recreation Master Plan, the region has been defined as the area within a one hour drive radius of the City of Fenton. This includes facilities with a large area having unique features and activities that will attract people from a broad geographic area (these facilities are shown on Map 3). The size and type of facilities vary, but in general these facilities are 200 acres or more in size.

Within the Fenton region there are four types of park ownership and authority. There are private, county, state and metropolitan parks. Privately owned parks include most of the golf courses, downhill ski facilities, and some campgrounds within the region. County and state areas include municipal golf courses, fairgrounds, state parks and state recreation areas.

An inventory was conducted as part of 2003 Parks and Recreation Plan of all the regional facilities within a one hour drive radius that have the potential to attract people from a broad geographic area. Regional facilities have been located on Map 3 and a composite listing of these facilities is outlined in Table 2. These tables show the distance from Fenton, acreage, and type of activities available at each facility. There are additional recreation facilities within an hour drive that were left out of this study. There are additional specific use facilities that, due to their size or the nature of their facilities, were not included. Note however, there are two Oakland County parks in the area, and two of which (Groveland Oaks and Independence Oaks County Campground) are identified in Table 2.

Regional recreational facilities have been grouped according to similar features. These facilities include: parks, including State and County parks; campgrounds; golf courses; cross-country and downhill ski areas. While the ownership and operation of these facilities can be either public or private, they are all open to the public. Those facilities that are not open to the general public have not been listed.

Map 3: Existing Regional Recreational Facilities



Map 3.: Existing Regional Recreation Facilities

City of
Fenton

State Parks

1. Bald Mountain State Recreation Area
2. Brighton State Recreation Area
3. Dodge No.4 State Park
4. Highland State Recreation Area
5. Holly State Recreation Area
6. Island Lake State Recreation Area
7. Metamora/Hadley State Recreation Area
8. Ortonville State Recreation Area
9. Pontiac Lake State Recreation Area
10. Proud Lake State Recreation Area
11. Seven Lakes State Park

Huron Metro Parks

12. Indian Springs Metropark
13. Kensington Metropark
14. Marshbank Metropark

County Parks

15. Addison Oaks County Park
16. Groveland Oaks County Park
17. Independence Oaks County Park
18. Timberwolf Campground
19. Wolverine Campground

Game Area

20. Lapeer Game/Wildlife Area



LSL

LANGWORTHY
STRADER
LEBLANC &
ASSOCIATES, INC.

June 2001

Table 3: Existing Regional Golf Courses

Name and Location	Number of Holes	Banquet Facilities	Food Service
0 to 5 mile radius			
Bramblewood - Holly *	9		
Fenton Farms - Fenton Twp.	18	X	X
The Preserve - Tyrone Township	18	X	X
Tyrone Hills - Tyrone Twp.	18	X	X
6 to 10 mile radius			
Dunham Hills - Milford	18		
Goodrich -Goodrich	18	X	X
Grand Blanc - Grand Blanc	27	X	X
Heather Highlands - Holly	18	X	X
Majestic - Hartland	27		X
Seifert's-Golf - Grand Blanc	9		
Springfield Oaks - Davisburg*	18		
11 to 15 mile radius			
Bogie Lake - Union Lake	18	X	X
Dama Farms - Howell*	18		
Faulkwood Shores - Howell	18	X	X
Genesee Valley - Swartz Creek*	18		
Hartland Glen - Hartland*	18		
Highland Hills - Highland*	18		
Ironwood - Howell*	9		
Loch Lomond - Flint	9	X	X
Southmoor - Burton*	18		
Spring Lake - Clarkston*	18		
Flint Golf Club - Flint	18	X	X
St. Andrews - Pontiac	DR		
Swartz Creek Municipal - Flint	18		
White Lake Oaks - Pontiac	18	X	X
Willow Brook - Byron*	18		
Woodland - Brighton	18	X	X
16 to 20 mile radius			
Oak Point Country Club - Brighton	36	X	X
Clarkston - Clarkston*	9		
Davison Road - Burton	DR		
El Dorado - Pontiac*	9		
Glenlore Milford*	18		
Harley's - Union Lake *	27		
Hickory Hills - Wixom *	9		
Kearsley Lake Municipal - Flint	18		
Kensington Metro-- Milford *	18		
Links at Pinewood - Walled Lake	18	X	X
Mott Municipal - Flint	9		
Paint Creek - Lake Orion	18	X	X
Pierce Park Municipal - Flint	18		
Pine Knob - Clarkston	18	X	X
Pontiac - Pontiac	18	X	X

Name and Location	Number of Holes	Range Facilities	Food Service
River Forest - Flint *	9		
Silver Lake - Pontiac 21 to 25 mile radius	9	X	X
Arrowhead - Pontiac	27	X	X
Bald Mountain - Lake Orion *	18		
Beechwood Greens - Mt. Morris	9		
Bon-O-Link - Novi *	18		
Carls Golfand - Bloomfield Hills	DR		
* Unable to verify facilities			
DR-Driving Range			

Fenton has a number of regional facilities within a small radius. Such facilities as Bald Mountain Recreation Area which offers a variety of activities spanning from group camping to a shooting range. Other facilities in the area are Pontiac Lake, Seven Lakes, Holly, and Brighton Recreation Areas, just to name a few. A complete listing of regional ski facilities is in Table 4 below.

Table 4: Regional Ski Facilities, City of Fenton

	Ski Rental	Lessons	Shelter/ Lodge	Concessions
Cross-Country Ski				
Heavner Cross-County Ski Area, Milford	X	X	X	X
Independence Oaks, Clarkston	X	X	X	X
Addison Oaks	X	X	X	X
Downhill Ski				
Mt. Holly, Holly	X	X	X	X
Alpine Valley, Milford	X	X	X	X
Mt. Brighton, Brighton	X	X	X	X
Pine Knob Ski Resort, Clarkston	X	X	X	X

Fishing and Swimming

There are three major lakes in the Fenton area, two of which are partially within the City boundaries. They are Lake Fenton, Lake Ponemah, and Silver Lake. There are predominantly seven species of fish within these lakes. The former District Fisheries Biologist for the Fenton area, Mr. Gary Towns, speaks very positively about the lakes. He indicated that Lake Fenton is one of the most clear lakes that he has ever surveyed. He also mentioned that the area lakes provide a quality habitat for the fish. Bluegill, crappie, bullhead, northern pike, perch, walleye, and small and large mouth bass can be found in the area lakes. Area lakes are listed in Table 5 below.

Table 5: Area Lakes

Lake	Size (Acres)	Max. Depth	% Developed	Water Sports	Access
Barnum Lake	22	60"	60%	Fishing, Swimming	Private
Bennett Lake	150	125'	95%	Fishing, Swimming, Boating	Private
Byram Lake	132	50"	85%	Swimming	Private

Lake	Size (Acres)	Max Depth	Developed	Wild Sports	Access
Lake Copneconic	110	50'	10%	Fishing, Swimming, Boating	Private
Crane Lake	38	20"	80%	None	Private
Crooked Lake	60	6'	70%	Fishing, Swimming, Pontoon Boating	Private
Hoisington Lake	125	62'	10%	None	Private
Lake Fenton	845	92'	95%	Fishing, Swimming, Boating	Public
Lobdell Lake	545	78'	85%	Fishing, Swimming, Boating	Public
Loon Lake	142	70'	50%	Fishing, Boating, Swimming	Public
Pine Lake	132	32'	65%	None	Private
Lake Ponemah	350	75%	60%	Camping, Swimming, Boating, Fishing	Public
Runyan Lake	160	70'	100%	None	Private
Lake Shannon	262	25'	n/a	None	Private
Silver Lake	330	95'	95%	Fishing, Swimming, Boating	Private
Squaw Lake	70	50'	95%	Fishing, Swimming, Boating	Private

Private Recreation Facilities

While generally not included within the spectrum of open-access, public recreation facilities, an inventory of private facilities helps to identify acute needs, and those which are being at least partially met through private means. Table 6 below provides a brief run down of Fenton area private recreation facilities.

Table 6: Private Recreation Facilities, Fenton Metro Area 2000

	Address	Activities
Camp Copneconic YMCA	10407 Fenton Road	Camp
Fenton School of Dance	2805 Silver Lake Road	Dance school
Dibbleville Yoga	Leroy Street	Yoga Studio
Chasse Ballroom & Dance	3180 W. Silver Lake Road	Dance Studio
Dauner Nature Preserve	Dauner Road	Nature Preserve
Spring Meadows Country Club	1129 Ripley Road, Linden	Private golf and pool
Balloon Quest	2470 Grange Hall Road	Hot air balloon rides
Michigan Balloon Corp.	958 Maple, Holly	Hot air balloon rides
Capt. Phogg Enterprises, LTD	14165 Fenton Road	Hot air balloon rides
Waldenwoods Resort	2975 Old US 23, Hartland	Family resort
Premier Indoor Sports	14261 Torrey Rd.	Soccer, Flag Football

Recreation Facilities Evaluation

There are six types of facilities servicing the City of Fenton. These facilities are classified as mini parks, neighborhood parks, community parks, regional/metropolitan parks, special use facilities, and passive parks. Each type of facility is classified in terms of the types of recreation opportunities available at the site. The parks and facilities included in the Parks and Recreation Master Plan have been classified in Table 7 below.

Table 7: Analysis of Existing Facilities

Parameter	Recreation Standards	City of Fenton Characteristics	Comments/Recommendations
Mini-Parks	<p>Mini-Parks are small, specialized parks, usually less than an acre in size, that serve the needs of residents in the surrounding neighborhood. A mini-park may serve a limited population or specific group such as tots or senior citizens.</p>	<p>There are 2 mini-parks in the City of Fenton, Franklin D. Adam Park and Millpond Park. These parks contain facilities such as play structures and picnic areas.</p>	<p>The NRPA recommends .25 to .50 mini-park acreage per 1,000 residents. The 2000 Census indicated that the City of Fenton had 10,582 residents. Based on this population, 265.3 acres of mini-parks are required. Although these parks total 3.8 acres at present, there are some major areas underserved. The southern as well as the northwest portions of the city are presently underserved while the city continues to expand.</p>
Neighborhood Parks	<p>Neighborhood parks are typically multi-purpose facilities that provide areas for intensive recreational activities, such as field games, court games, crafts, playgrounds, skating, picnicking, etc. Neighborhood parks are generally 15 acres or more in size and serve a population up to 5,000 residents located within 1/4 to 1/2 mile radius from the neighborhood they serve.</p>	<p>Bush Park, as well as the four elementary schools (Tomek-Eastern, St. John, North Road and State Road) are all typical of neighborhood parks. These parks provide facilities for intensive recreational activities.</p>	<p>These parks, which total approximately 56 acres, exceed the NRPA recommendations. The NRPA recommends 1 to 2 acres of neighborhood parks per 1,000 residents. Based on the 2000 population of the City of Fenton this would require 10.6-21.2 acres of neighborhood park land. The coverage of the city is presently sufficient with the exception of the northwest portion. This area, which is in the process of developing the Silver Lake Parkway, will be in need of neighborhood park facilities in the plan.</p>

Parameter	Recreation Standards	City of Fenton Characteristics	Comments
Community Parks	<p>Community parks typically contain a wide variety of recreation facilities to meet the diverse needs of residents from several neighborhoods. Community parks may include areas suited for intense recreational facilities, such as athletic complexes and swimming pools. These parks usually contain other facilities not commonly found in neighborhood parks such as nature areas, picnic pavilions, lighted ballfields, and concession facilities.</p>	<p>Silver Lake Park is typical of a community park as well as being a regional facility. Fenton's middle and high schools also have some characteristics of a community park but are lacking basic facilities. The facilities found at the middle and high schools include large swimming pools, major sport facilities, and concessions.</p>	<p>Combined, the middle school and high school exceed 131 acres. The NRPA's standard requirements for community parks are 5 to 8 acres per 1,000 residents for a total of 52.9-84.7 acres for the city based on the 2000 population. Based on a service area with a 1 to 2 mile radius, the city appears to have adequate facilities. Although the two schools contain some of the same uses as a community park, the parks are still lacking. The schools lack facilities such as: walking or nature trails, picnic areas, and basic play structures and equipment. Silver Lake Park has adequate facilities but does not fulfill the NRPA's acreage requirement alone. The existing school facilities will need to be improved or additional facilities added elsewhere.</p>
Regional/Metropolitan Parks	<p>Regional parks are typically located on sites with unique natural features which are particularly well suited for outdoor recreation, such as viewing and studying nature, wildlife habitats, conservation, swimming, picnicking, hiking, fishing, boating, camping, and trail use. Many also include active play areas.</p>	<p>The city contains its own regional park, Silver Lake Park. The city is also served by a multitude of other regional facilities such as: Holly, Pontiac, and Brighton State Recreation areas. Silver Lake Park is typical of a regional park offering facilities such as: ballfields, volleyball courts, playground equipment, picnic areas, and many acres of scenic wilderness.</p>	<p>Regional parks typically serve several communities within a one-hour drive. Fenton is surrounded by an abundance of regional facilities within a short distance.</p>